



## REGIONAL SPECIALISED METEOROLOGICAL CENTRE-TROPICAL CYCLONES, NEW DELHI TROPICAL WEATHER OUTLOOK

DEMS-RSMC TROPICAL CYCLONES NEW DELHI DATED 20.05.2025

**TROPICAL WEATHER OUTLOOK FOR THE NORTH INDIAN OCEAN (THE BAY OF BENGAL AND THE ARABIAN SEA) VALID FOR THE NEXT 168 HOURS ISSUED AT 0600 UTC OF 20.05.2025 BASED ON 0300 UTC OF 20.05.2025.**

### BAY OF BENGAL:

Yesterday's upper air cyclonic circulation over westcentral & adjoining southwest Bay of Bengal lay over westcentral Bay of Bengal adjoining south Andhra Pradesh & north Tamil Nadu extending upto 1.5 km above mean sea level, tilting southwestwards with height at 0300 UTC of today, the 20<sup>th</sup> May, 2025.

Scattered low and medium clouds with embedded intense to very intense convection lay over southwest Bay of Bengal off coastal Andhra Pradesh-Tamil Nadu coasts. Scattered low and medium clouds with embedded moderate to intense convection lay over rest of Bay of Bengal & Andaman Sea.

#### \*PROBABILITY OF CYCLOGENESIS (FORMATION OF DEPRESSION) DURING NEXT 168 HRS:

24 HOURS	24-48 HOURS	48-72 HOURS	72-96 HOURS	96-120 HOURS	120-144 HOURS	144-168 HOURS
NIL	NIL	NIL	NIL	NIL	NIL	NIL

\*NOTE: EVERY 24HR FORECAST IS VALID UPTO 0300 UTC (0830 IST) OF NEXT DAY

### ARABIAN SEA:

An upper air cyclonic circulation is likely to form over eastcentral Arabian Sea off Karnataka coast around 21<sup>st</sup> May. Under its influence, a Low-pressure area is likely to form over the same region around 22<sup>nd</sup> May. Thereafter, it is likely to move northwards and intensify further.

Scattered low and medium clouds with embedded intense to very intense convection lay over eastcentral & southeast Arabian Sea off Maharashtra-Goa-Karnataka-Kerala coasts & Lakshadweep Islands area. Scattered low and medium clouds with embedded moderate to intense convection lay over southwest Arabian Sea, Maldives & Comorin area.

#### \*PROBABILITY OF CYCLOGENESIS (FORMATION OF DEPRESSION) DURING NEXT 168 HRS:

24 HOURS	24-48 HOURS	48-72 HOURS	72-96 HOURS	96-120 HOURS	120-144 HOURS	144-168 HOURS
NIL	NIL	NIL	LOW	LOW	MOD	HIGH

\*NOTE: EVERY 24HR FORECAST IS VALID UPTO 0300 UTC (0830 IST) OF NEXT DAY

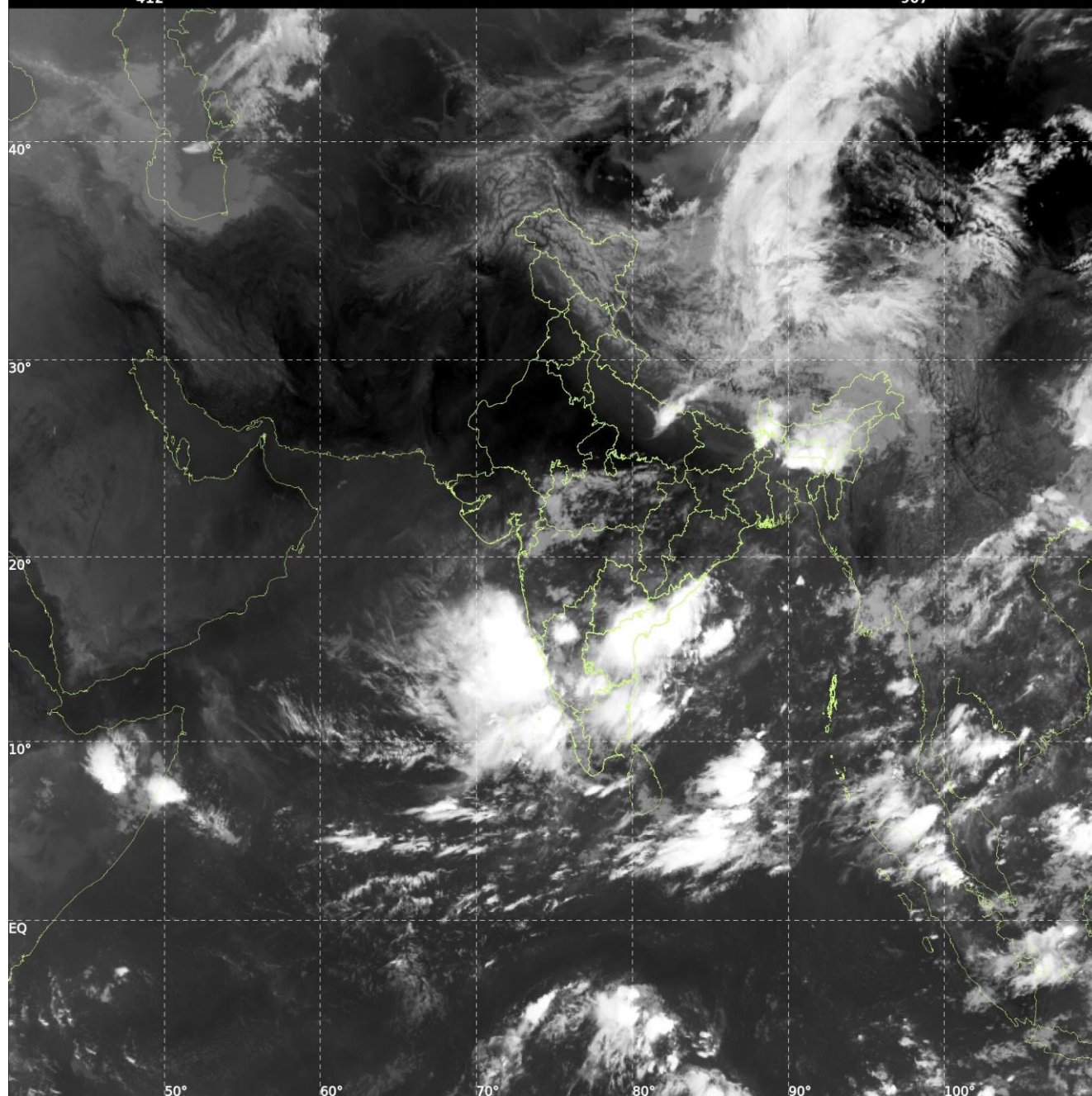
**REMARKS:** NIL



INSAT-3DS IMG, Thermal Infrared1 Count @ 10.83  $\mu\text{m}$   
GMT:20-05-2025/(0300-0327) IST:20-05-2025/(0830-0857)  
L1C MERCATOR (LINEAR STRETCH: 1%)

412

907



Cloud distribution: (a) Isolated: <25%, Scattered:25-50%, Broken: 51-75%, Solid:>75%, Convection Intensity: (a) Weak: Cloud Top Temperature(CTT)>-25°C,(b)Moderate:CTT:-25°Cto-40°C,(c)Intense:CTT: -41°Cto -70°Cand(d)Very Intense::Less than -70°C  
PROBABILITYOFCYCLOGENESIS(FORMATIONOFDEPRESSION):NIL:0%,LOW:1-33%,MODERATE:34-66%ANDHIGH:67-100%  
ThisisaguidanceBulletinforWMO/ESCAPPanelMembercountries.VisitrespectiveNationalwebsitesforCountryspecificBulletins